







### CROSBY MCKISSICK 419 SNATCH BLOCKS C/W SWIVEL 4PCE SHACKLE

Forged steel swivel tees, yokes and shackles. Also available on indent ex-USA in other sizes and models including types 418 with swivel hook and 404 tail board snatch blocks. Bronze Bush sleeve with roller bearing options available on request. All 418 & 419 blocks have exclusive bolt retaining spring to assure no lost bolts with pressure lube fittings. Opening feature permits insertion of wire roope while block is suspended.

**⚠ ULTIMATE LOAD IS 4 TIMES THE WORKING LOAD LIMIT.**

Product Code	Part No.	Suit Wire Dia. (mm)	Working Load Limit (kgs)	Sheave Dia. (mm)	Approx. Weight (kgs)
02225075	109091	8mm to 10mm	2000kg	76mm	2.5kg
02225110	109064	10mm to 13mm	4000kg	115mm	7kg
02225149	109224	16mm to 19mm	8000kg	204mm	18.5kg
02225249	109322	16mm to 19mm	8000kg	254mm	22kg
02225269	203041	19mm to 20mm	15000kg	407mm	70kg
02225275	109607	22mm to 23mm	15000kg	407mm	70kg
02225279	108644	25mm to 26mm	15000kg	460mm	80kg



### CROSBY MCKISSICK 421 SNATCH BLOCKS C/W SWIVEL 4PCE SHACKLE

Forged steel swivel tees, yokes and shackles. Also available on indent ex-USA in other sizes and models including types 420 with swivel hook and 406 tail board snatch blocks. Bronze Bush sleeve with roller bearing options available on request. All 420 & 421 blocks have exclusive bolt retaining spring to assure no lost bolts with pressure lube fittings. Opening feature permits insertion of wire roope while block is suspended.

**⚠ ULTIMATE LOAD IS 4 TIMES THE WORKING LOAD LIMIT.**

Product Code	Part No.	Suit Wire Dia. (mm)	Working Load Limit (kgs)	Sheave Dia. (mm)	Approx. Weight (kgs)
02226200	169515	19mm	12000kg	204mm	29kg
02226249	110720	19mm to 23mm	12000kg	254mm	32kg



### CROSBY MCKISSICK 431 SNATCH BLOCKS C/W SWIVEL 4PCE SHACKLE

Forged steel swivel tees, yokes and shackles. Also available on indent ex-USA in other sizes and models including types 430 with swivel hook and 407 tail board snatch blocks. Roller bearing type with bronze bush options available on request. All 430 & 431 blocks have exclusive bolt retaining spring to assure no lost bolts with pressure lube fittings. Opening feature permits insertion of wire roope while block is suspended.

**⚠ ULTIMATE LOAD IS 4 TIMES THE WORKING LOAD LIMIT.**

Product Code	Part No.	Suit Wire Dia. (mm)	Working Load Limit (kgs)	Sheave Dia. (mm)	Approx Weight (kgs)
02227250	121095	25mm	20000kg	254mm	59kg
02227260	209465	25mm to 26mm	25000kg	460mm	150kg
02227270	169864	28mm to 29mm	30000kg	508mm	220kg
02227280	209553	30mm to 32mm	30000kg	610mm	250kg



### CROSBY MCKISSICK M-491 TOWER/DERRICK HOIST SNATCH BLOCKS C/W SWIVEL 4PCE SHACKLE

Perfect for oil rig tower & derrick Erection applications. Recessed sideplates, Sealed tapered roller bearings, suitable for hoisting personal. Holes in sideplates to allow securement wire rope or device. API Q1 approved and in accordance with ABS 2006 1-1-17.7. Tugger/Derrick API RP54 & OSHA CPL 2-1.36

**⚠ ULTIMATE LOAD IS 4 TIMES THE WORKING LOAD LIMIT.**

Product Code	Painted M-491S Part No.	Galv. Product Code	Galv. M-491G Part No.	Suit Wire Dia. (mm)	Working Load Limit (kgs)	Sheave Dia. (mm)	Approx. Weight (kgs)
02227491	2021136	02227491G	2021145	16mm	12000kg	360mm	55kg
02227493	2021154	02227493G	2021163	19mm	12000kg	360mm	55kg
02227495	2021172	02227495G	2021181	23mm	15000kg	410mm	85kg
02227497	2021190	02227497G	2021199	26mm	15000kg	410mm	85kg

## HEAVY DUTY SHIPS' LASHING BLOCK

- Single Snatch Operation
- Swivel Oval Eye
- Tested & Certified
- Ball Bearing
- Rope Becket
- Single Sheave Model

**⚠ NOT SUITABLE FOR LIFTING APPLICATIONS**

Product Code	Sheave Dia. (mm)	Max Wire Rope Dia. (mm)	Max Lashing Load (tonne)	Proof Load (tonne)	Weight (kg)
02006156	150	22	10.0	20T	10.2



## GENERAL PURPOSE SINGLE SHEAVE BALL BEARING BLOCK

- Swivel Oval Eye
- Forged Steel Sheaves
- Ball Bearings

Product Code Single Sheave	Sheave Dia. (mm)	Rec. Wire Rope Dia. (mm)	Max Working Load (tonne)
02005210	75	13	0.5
02005215	100	16	1.0
02005220	125	19	1.5
02005225	150	19	2.0



## GENERAL PURPOSE DOUBLE SHEAVE BALL BEARING BLOCKS

- Swivel Oval Eye
- Forged Steel Sheaves
- Ball Bearings

Product Code Double Sheave	Sheave Dia. (mm)	Rec. Wire Rope Dia. (mm)	Max Working Load (tonne)
02005228	75	13	0.5
02005230	100	16	1.0
02005235	125	19	1.5
02005240	150	19	2.0



## OFF ROAD (4WD) BLOCK

- Specially Designed For Off Road Vehicle Recovery
- Large Diameter Fixing Hole Fits Any Towball
- Suitable For Use With Hand or Powered Winches
- Bronze Bush

**⚠ NOT SUITABLE FOR LIFTING APPLICATIONS**

Product Code	Sheave Dia. (mm)	Max Wire Rope Dia. (mm)	Max. Pulling Load (tonne)	Weight (kg)
02007125	125	11	8	3.10



## STAINLESS STEEL SINGLE PULLEY

- Stainless Steel (aisi 316)
- Commercial Grade Untested
- Swivel Oval Eye

**⚠ NOT SUITABLE FOR LIFTING APPLICATIONS**

Product Code Single Sheave	Sheave Dia. (mm)	Max Rope Dia. (mm)	Weight Single Sheave (kg)
09568725	25	8	0.15
09568732	32	10	0.20
09568750	50	12	0.50



## STAINLESS STEEL DOUBLE PULLEY

- Stainless Steel (aisi 316)
- Commercial Grade Untested
- Swivel Oval Eye

**⚠ NOT SUITABLE FOR LIFTING APPLICATIONS.**

Product Code Double Sheave	Sheave Dia. (mm)	Max Rope Dia. (mm)	Weight Double Sheave (kg)
09568726	25	8	0.22
09568733	32	10	0.3
09568751	50	12	0.64





## HEAVY DUTY PULLEY BLOCKS – DOUBLE SHEAVE

- Single Snatch Operation
- Plain Bearing
- Swivel Oval Eye
- Rope Becket
- Tested & Certified
- Available in Single or Double Sheave Models

Product Code	Sheave Dia. (mm)	Min/Max Wire Rope Dia (mm)	Max Working Load (tonne)	Proof Load (tonne)	Weight (kg)
02005703	75	7-11	0.5	1.0	2.15
02005704	100	9-13	1	2.0	4.0
02005706	150	13-19	2	4.0	11.35
02005708	180	16-24	3	6.0	17.8

## HEAVY DUTY PULLEY BLOCKS – SINGLE SHEAVE

- Single Snatch Operation
- Plain Bearing
- Swivel Oval Eye
- Rope Becket
- Tested & Certified
- Available in Single or Double Sheave Models



Product Code	Sheave Dia. (mm)	Min/Max Wire Rope Dia (mm)	Max Working Load (tonne)	Proof Load (tonne)	Weight (kg)
02005603	75	7-11	0.5	1.0	1.3
02005604	100	9-13	1	2.0	2.55
02005606	150	13-19	2	4.0	7.3
02005608	180	16-24	3	6.0	11.2

## GENUINE SWISS MANUFACTURED FELCO WIRE ROPE CUTTERS MODEL C7

The C7 cutter is an outstandingly powerful tool for cutting up to 7mm Ø wire rope or spring wire up to 2.5mm Ø. The long lasting quality of this cutter makes it suitable for manufacturing and hobby use.



## MODEL C9

The smallest two-handed Felco cutter: Powerful, light and easy to use, the C9 will cut up to 9mm Ø wire rope as well as hardened steel wire up to 4mm Ø. The ideal cutter to complete any tool box. All parts easily replaceable.



## MODELS C12 AND C16

Strong, lightweight aluminium handles and special alloy steel blades give these robust, heavy duty cutters outstanding performance. Their cutting capacity is optimised by the shape of the new handles. This is a professional tool made to last in a manufacturing environment when cutting wire rope, steel rod or spring wire. All parts easily replaceable.

Cutting Capacity in mm Diameter:

Product Code	Model	Description	Cutting Capacity in mm Diameter
02036007	C7	High tensile steel strands, resistance 160kg/mm <sup>2</sup>	5
		Extra tough wire rope and stands, resistance 210kg/mm <sup>2</sup>	3
02036009	C9	High tensile steel strands, resistance 160kg/mm <sup>2</sup>	7
		Extra tough wire rope and stands, resistance 210kg/mm <sup>2</sup>	5
02036012	C12	High tensile steel strands, resistance 160kg/mm <sup>2</sup>	8
		Extra tough wire rope and stands, resistance 210kg/mm <sup>2</sup>	5
2036016	C16		



## AMERICAN MANUFACTURED MORSE STARRET IMPACT TYPE WIRE ROPE CUTTERS

Spare plungers, blades and dies available.

Product Code	Model Number	Wire Rope Cutting Capacity Dia. (mm)	Weight (kg)
02039100	1 Light Duty	19	3.6
02039200	1A Heavy Duty	26	7.7
02039300	2 Extra Heavy Duty	38	12.7



## JAPANESE MANUFACTURED ARM WIRE ROPE SWAGE TOOL

A hand operated swaging tool that incorporates a cutting device.

Product Code	Wire Rope Cutting Capacity Dia. (mm)	Weight (kg)
02020002	1.5-5.0	2.5

Full range of crimping sleeves available to suit.



## WIRE ROPE GRIPS

### Applications

Wire rope grips are used on wire rope eye-loop connections or complete-loop, end-to-end connections where socketing or splicing is not feasible when a non-permanent or temporary joint is required.

### Range:

- Commercial Electro-Galvanised
- Commercial Stainless Steel
- DIN 1142 Electro-Galvanised
- FF-C-450 Hot Dip Galvanised

### Instructions For Use

#### Cautions And Warnings

The wire rope grip should be fitted to the wire rope as shown schematically in the figures.

The bridge of the grip should be fitted on the working part of the rope and the U-bolt on the rope tail or dead end of the rope.

Turn back enough wire rope length so that the required minimum number of grips can be installed according to the instructions below.

1) the first grip must be placed one saddle width from the turned back rope tail or dead end of the rope.

See figure 1.

Tighten the nuts to the specified torque.\*



Figure 1.

2) The second wire rope grip must be placed immediately against the thimble but nevertheless in such a position that the correct tightening of the grip does not damage the outer wires of the rope.

See figure 2.

Turn on the nuts firmly but not yet to the specified torque.\*

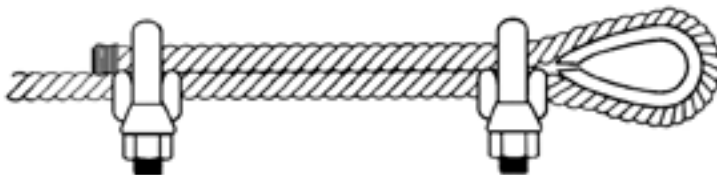


Figure 2.

3) All other grips must be placed between the first and second grip in such a way that they are separated by at least one clear grip width from each other.

See figure 3.

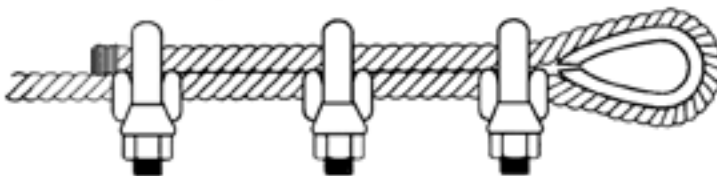


Figure 3.

4) Apply light tension to the rope and tighten all nuts to the specified torque.

## ⚠ WARNING

- Failure to read, understand, and follow these instructions may cause death or serious injury.

# COOKES

www.cookes.co.nz



COMMERCIAL PATTERN WIRE GRIPS

**CAREFULLY INSPECT  
ALL WIRE ROPE  
GRIPS PRIOR TO USE**

**COMMERCIAL WIRE ROPE GRIPS MUST NOT BE USED IN LOAD BEARING APPLICATIONS**

**RECOMMENDED NUMBER OF COMMERCIAL PATTERN GRIPS FOR ROPE DIAMETERS**

Wire Rope Diameter (mm)	Number Of Grips To Be Fitted
3 - 6	2
8 - 16	3
20 - 22	4
23 - 26	5
28 - 30	6

**PLEASE TURN OVER FOR FITTING INSTRUCTIONS**

## ⚠ WARNING

# COOKES

www.cookes.co.nz

**MALLEABLE WIRE ROPE GRIPS TO STANDARD DIN 1142**

Table 1

**REQUIRED TIGHTENING TORQUE & MINIMUM NUMBER OF DIN 1142 GRIPS  
TO ATTAIN 80% OF ROPE MINIMUM BREAKING LOAD**

Wire Rope Dia (mm)	Min No. of Grips	Torque Value (N.m)	Wire Rope Dia (mm)	Min No. of Grips	Torque Value (N.m)
5	3	2.0	19	5	68.0
6.5	3	3.5	22	5	107
8	4	6.0	26	5	147
10	4	9.0	30	6	212
13	4	33.0	34	6	296
16	4	49.0			

**TORQUE SETTINGS MUST BE CHECKED PRIOR TO, & AFTER A LOAD IS APPLIED, & CORRECTED IF NECESSARY. TORQUE SETTINGS SHOULD BE RE-CHECKED AT REGULAR INTERVALS.**

REFER YOUR NEAREST COOKES BRANCH FOR INFORMATION ON ANY SIZES NOT LISTED ABOVE

Malleable wire rope grips should be used only in non-critical applications.  
For Critical applications use forged wire rope grips are recommended

**! WARNING**

- Failure to read, understand, and follow these instructions may cause death or serious injury.
- Read and understand these instructions before using wire rope grips.
- Match the same size grip to the same size wire rope.
- Prepare wire rope end termination only as instructed
- Do not use plastic coated wire rope.
- Apply first load to test the assembly. This load should be of equal or greater weight than loads expected in use. Next, check and retighten nuts to recommended torque ( see Table1)



www.cookes.co.nz

**FORGED WIRE ROPE GRIPS TO FEDERAL SPECIFICATION FF-C-450**



**CAREFULLY INSPECT ALL WIRE ROPE GRIPS PRIOR TO USE**

**INSTRUCTIONS FOR USE**

The wire rope grip should be fitted to the wire rope as shown. The bridge of the grip should be fitted on the working part of the rope and the U-bolt on the rope tail (dead end) of the rope. Turn back enough wire rope length so that the required minimum number of grips can be installed according to the instructions below.

1) The first grip must be placed one saddle width from the turned back rope tail or dead end of the rope See figure 1. Tighten the nuts to the specified torque shown in Table 1 (over).

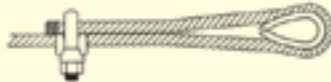


Figure 1

2) The second wire rope grip must be placed immediately against the thimble in such a position that the correct tightening of the grip does not damage the outer wires of the rope. See figure 2. Turn on the nuts firmly but not yet to the specified torque.



Figure 2

3) All other grips must be placed between the first and second grip in such a way that they are separated by at least one clear grip width from each other See figure 3.



Figure 3

4) Apply light tension to the rope and tighten all nuts to the specified torque shown in table 1 (over).

**PLEASE TURN OVER FOR TORQUE SETTINGS**

**! WARNING**



www.cookes.co.nz

**FORGED WIRE ROPE GRIPS TO FEDERAL SPECIFICATION FF-C-450**

TABLE 1

**REQUIRED TIGHTENING TORQUE & MINIMUM NUMBER OF FF-C-450 GRIPS TO ATTAIN 80% OF ROPE MINIMUM BREAKING LOAD**

Wire Rope Dia (in)	Wire Rope Dia (mm)	Min No. of Grips	Torque Value (ft. Lbs.)	Wire Rope Dia (in)	Wire Rope Dia (mm)	Min No. of Grips	Torque Value (ft. Lbs.)
1/4	6-7	2	15	1-0	24-26	5	225
5/16	8	3	30	1-1/8	28-30	6	225
3/8	9-10	3	45	1-1/4	32-34	7	360
7/16	11-12	3	65	1-3/8	35-36	7	360
1/2	13	3	65	1-1/2	38-40	8	360
5/8	16	3	95	1-5/8	41-42	8	430
3/4	18-20	4	130	1-3/4	44-46	8	590
7/8	22	4	225	2-0	48-52	8	750

**TORQUE SETTINGS MUST BE CHECKED PRIOR TO, & AFTER A LOAD IS APPLIED, & CORRECTED IF NECESSARY. TORQUE SETTINGS SHOULD BE RE-CHECKED AT REGULAR INTERVALS.**

REFER YOUR NEAREST COOKES BRANCH FOR INFORMATION ON ANY SIZES NOT LISTED ABOVE  
Suitable use of wire rope grips to FF-C-450 include suspension of static loads which have been assessed by a competent person taking into account appropriate safety factors.



## WIRE ROPE GRIPS (GALVANISED)

The efficiency of a wire rope termination made with wire rope grips will depend upon their correct placement on the ropes and the care and skill in the fitting and tightening of the grips. With inadequately tightened nuts or with an insufficient number of wire rope grips the rope end may draw through the grips at a very early stage in loading.

A number of factors can adversely affect the tightness of grips upon ropes, such as:

- the nut may be tight on the thread, yet not tight against the bridge.
- contamination of the thread by, for example, dirt and corrosion products, may prevent the correct tightening of the nut.

Forged wire rope grips provide greater bearing surface and more consistent strength than malleable cast iron grips.

**Malleable cast iron grips should be used only in non-critical application only.**

For critical applications only forged wire rope grips are recommended.

Never use any wire grip for directly connecting two straight lengths of wire rope.

Wire Rope grips may only be used in applications where such use has been approved by Regulatory Authorities.

**Your supplier must provide you with a chart outlining the Fitting Instructions & Torque Settings applicable to the sizes of Wire Rope Grips purchased.**

### CROSBY G-450 "RED U-BOLT" FORGED WIRE ROPE GRIP

Forged Wire Rope Clips

Finish: Hot Dip Galvanized

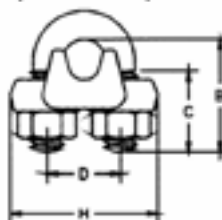
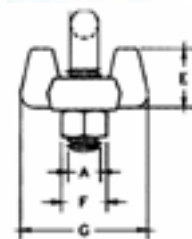


\*Crosby products meet or exceed all requirements of ASME B30.26 including identification, ductility, design factor, proof load and temperature requirements.

\*Only genuine Crosby clips have a Red U-Bolt for instant recognition.

Rope Size (mm)	Product Code	Part No.	Weight Per 100 kg	A (mm)	B (mm)	C (mm)	D (mm)	E (mm)	F (mm)	G (mm)	H (mm)
8	02217008	1010079	12.7	9.65	35.1	19.1	22.4	18.3	17.5	33.3	42.9
10	02217009	1010097	21.8	11.2	38.1	19.1	25.4	23.1	19.1	41.4	49.3
13	02217013	1010131	36.3	12.7	47.8	25.4	30.2	28.7	22.4	48.5	58.0
14	02217014	1010159	49.4	14.2	57.0	31.8	33.3	31.0	23.9	52.5	63.5
16	02217016	1010177	49.9	14.2	60.5	31.8	33.3	34.0	23.9	52.5	63.5
19	02217019	1010195	64	15.7	70.0	36.6	38.1	35.8	26.9	57.0	72.0
22	02217022	1010211	96	19.1	79.0	41.1	44.5	40.4	31.8	62.0	80.5
26	02217026	1010239	114	19.1	89.0	46.0	47.8	45.2	31.8	67.0	88.0
28	02217028	1010257	128	19.1	98.5	51.0	51.0	48.5	31.8	71.5	91.0
32	02217032	1010275	199	22.4	108	54.0	58.5	55.5	36.6	79.5	105
35	02217035	1010293	200	22.4	118	58.5	60.5	58.5	36.6	79.5	106
38	02217038	1010319	247	22.4	125	60.5	66.5	62.0	36.6	86.5	113

For more information on these shackles or any other Crosby products, please refer to web site Remember,



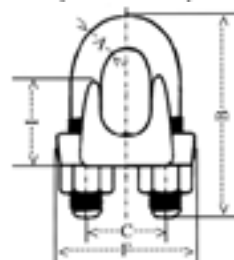
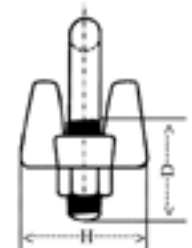
### WIRE ROPE GRIP GENERALLY TO U.S FEDERAL SPEC. FF-C450

• Drop Forged

• Material: High Tensile Steel

• Finish: Hot Dip Galvanized

Product Code	Rope Dia. (mm)	Bow Dia. (mm)	Bow Length (mm)	Inside Width (mm)	Thread Length (mm)	Base Length (mm)	Base Thickness (mm)	Base Height (mm)
		A	B	C	D	F	H	I
02101408	5/16	10	45	22	19	43	33	18
02101410	3/8	11	49	26	19	49	42	25
02101411	7/16	12	60	30	25	58	46	26
02101413	1/2	13	61	30	26	64	48	27
02101416	5/8	14	74	33	32	72	52	33
02101419	3/4	16	86	38	37	80	57	37
02101422	7/8	19	98	45	40	88	62	40
02101426	1-0	19	108	48	46	91	67	44
	1-1/8	19	117	51	51	105	72	48
	1-1/4	22	130	59	54	108	79	56
	1-3/8	22	140	60	59	112	79	58
	1-1/2	22	147	66	60	121	86	64
	1-5/8	26	161	70	67	134	92	67
	1-3/4	29	175	78	74	152	97	78
	2-0	30	195	86	78		113	87



**REQUIRED TIGHTENING TORQUE & MINIMUM NUMBER OF FF-C-450 GRIPS TO ATTAIN 80% OF ROPE MINIMUM BREAKING LOAD**

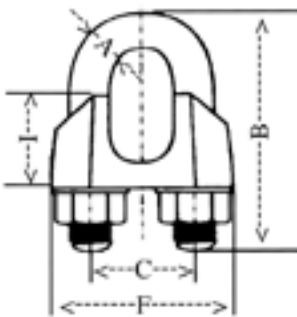
Wire Rope Dia. (in)	Min No. of Grips	Torque Value (Ft. Lbs.)
5/16	2	30
3/8	2	45
1/2	3	65
5/8	3	95
3/4	4	130
7/8	4	225
1-0	5	225
1-1/8	6	225
1-1/4	7	360
1-3/8	7	360
1-1/2	8	360
1-5/8	8	430
1-3/4	8	590
2-0	8	750

**WIRE ROPE GRIP GENERALLY TO DIN 1142**

- U Bolt: Carbon Steel
- Body: Mild Steel
- Electro-Galvanised

**⚠ MAY ONLY BE USED WITH LIFTING TACKLE WHERE THESE ARE PRODUCED FOR A SPECIAL APPLICATION AND ARE NOT RE-USED.**

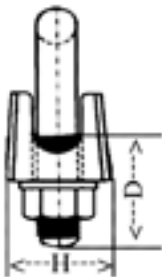
WIRE ROPE GRIPS: DIMENSIONS & MASSES ARE SUBJECT TO COMMERCIAL TOLERANCES AND DESIGN CHANGES WITHOUT NOTICE.



Product Code	Rope Dia. (mm)	Bow Dia. (mm)	Bow Length (mm)	Inside Width (mm)	Thread Length (mm)	Base Length (mm)	Base Thickness (mm)	Base Height (mm)
		<b>A</b>	<b>B</b>	<b>C</b>	<b>D</b>	<b>F</b>	<b>H</b>	<b>I</b>
02100005	5	4	25	12	14	25	13	13
02100006	6.5	5	32	14	17	30	16	14
02100008	8	7	41	18	20	39	20	18
02100010	10	7	46	20	24	40	20	21
02100013	13	11	64	29	29	55	28	29
02100016	16	12	76	34	35	64	32	35
02100019	19	12	83	37	36	68	33	40
02100022	22	14	96	41	40	74	34	44
02100026	26	18	111	46	50	84	38	51
02100030	30	18	127	54	55	95	41	59
02100034	34	22	141	60	60	105	45	67

**REQUIRED TIGHTENING TORQUE & MINIMUM NUMBER OF DIN 1142 GRIPS TO ATTAIN 80% F ROPE MINIMUM BREAKING LOAD**

Wire Rope Dia. (mm)	Min No. of Grips	Torque Value (N.m)
5	3	2.0
6.5	3	3.5
8	4	6.0
10	4	9.0
13	4	33.0
16	4	49.0
19	5	68.0
22	5	107
26	5	147
30	6	212
34	6	296

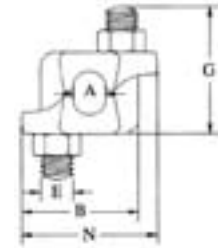
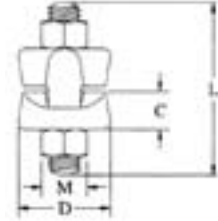


## WIRE ROPE FIST GRIP GENERALLY TO U.S. FEDERAL SPEC. FF-C-450

- Drop Forged
- Material: High Tensile Steel
- Finish: Hot Dip Galvanised

Product Code	Rope Dia (in)	Dimensions (inches)								
		A	B	C	D	E	G	L	M	N
	3/16-1/4	0.25	1.25	0.34	0.94	0.38	1.28	1.36	0.69	1.47
02101708	5/16	0.31	1.34	0.44	1.06	0.38	1.47	1.94	0.69	1.56
02101710	3/8	0.38	1.59	0.50	1.06	0.44	1.81	2.38	0.75	1.88
02101712	7/16-1/2	0.50	1.88	0.56	1.25	0.50	2.19	2.75	0.88	2.19
02101715	9/16-5/8	0.63	2.28	0.69	1.50	0.63	2.69	3.50	1.06	2.63

WIRE ROPE FIRST GRIPS: DIMENSIONS & MASSES ARE SUBJECT TO COMMERCIAL TOLERANCES AND DESIGN CHANGES WITHOUT NOTICE.



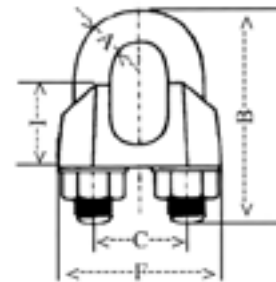
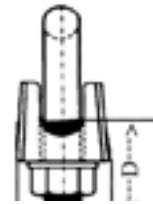
## COMMERCIAL WIRE ROPE GRIP (GALVANISED)\*

- Material: Mild Steel
- Finish: Electro-Galvanised

**⚠ NOT SUITABLE FOR LOAD BEARING APPLICATIONS**

Product Code	Rope Dia. (mm)	Bow Dia. (mm)	Bow Length (mm)	Inside Width (mm)	Thread Length (mm)	Base Length (mm)	Base Thickness (mm)	Base Height (mm)
02099003	3	4	20	9	12	21	10	10
02099005	5	5	24	11	13	23	11	10
02099006	6	5	28	13	15	26	12	11
02099008	8	6	34	16	19	30	14	15
02099009	10	8	42	19	22	34	18	17
02099013	13	10	55	24	30	42	23	21
02099016	16	12	63	29	33	50	26	26
02099019	19	12	75	32	38	54	29	30
02099022	22	14	85	37	44	61	33	34
02099026	26	13	95	44	46	65	35	37
02099028	28	14	105	49	50	73	73	43

\*DIMENSIONS & MASSES ARE SUBJECT TO COMMERCIAL TOLERANCES AND DESIGN CHANGES WITHOUT NOTICE.



## COMMERCIAL WIRE ROPE GRIPS (STAINLESS STEEL)

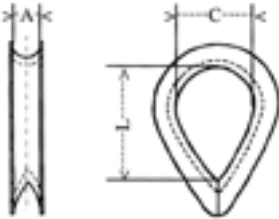
- Material: Stainless Steel (aisi 304)
- Finish: Electro-Polished
- Larger Sizes Imported To Order

**⚠ NOT SUITABLE FOR LOAD BEARING APPLICATIONS**

Product Code	Wire Rope Dia. (mm)	Nett Weight (kg)
09568303	3	0.01
09568304	4	0.02
09568305	5	0.03
09568306	6	0.04
09568308	8	0.05
09568310	10	0.15

DIMENSIONS & MASSES ARE SUBJECT TO COMMERCIAL TOLERANCES AND DESIGN CHANGES WITHOUT NOTICE.

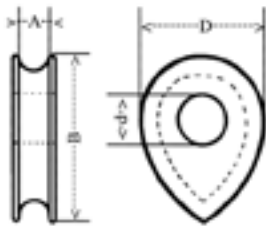




## HEAVY DUTY WIRE ROPE THIMBLE (GALVANISED)

- To BS464.
- Material: Mild Steel
- Finish: Hot Dip Galvanised

Product Code	Rope Dia. (mm)	Groove Width (mm) A	Overall Length (mm) B	Inside Width (mm) C
02106008	8	8	54	22
02106009	9	10	64	25
02106011	11	13	73	29
02106013	13	14	80	32
02106016	16	16	98	41
02106019	19	21	124	51
02106022	22	22	133	57
02106026	25	27	162	70
02106028	29	29	178	76
02106032	32	33	197	95
02106035	35	38	229	105
02106038	38	41	254	114
02106044	45	51	286	127
02106051	51	64	330	140

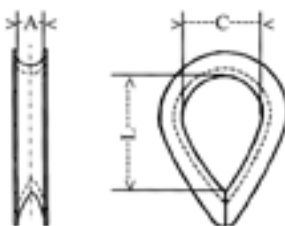


## SOLID CAST WIRE ROPE THIMBLE (SELF COLOUR)

Generally to DIN 3091

DIMENSIONS & MASSES ARE SUBJECT TO COMMERCIAL TOLERANCES AND DESIGN CHANGES WITHOUT NOTICE.

Product Code	Rope Dia.	Groove Width A (mm)	Overall Length B (mm)	Outside Width D (mm)	Hole Dia d (mm)
02113008	8	9	56	40	15
02113010	10	11	70	50	17
02113012	12	13	84	60	20
02113016	16	18	110	80	29
02113020	20	22	140	100	35
02113022	22	24	150	110	39
02113026	26	29	180	130	45
02113028	28	31	200	140	47
02113032	32	35	220	160	51



## COMMERCIAL WIRE ROPE THIMBLE (GALVANISED)

Generally to DIN 6899-B

Material: Mild Steel

Finish: Size 5 & 6mm Electro-Galvanised, 8mm & Above Hot Dip Galvanised

**⚠ NOT SUITABLE FOR LIFTING APPLICATIONS**

DIMENSIONS & MASSES ARE SUBJECT TO COMMERCIAL TOLERANCES AND DESIGN CHANGES WITHOUT NOTICE.

Product Code	Rope Dia. (mm)	Groove Width A (mm)	Inside length L (mm)	Inside Width C (mm)
02105005	5	6	25	16
02105006	6	7	28	18
02105008	7	8	32	20
02105010	9	10	38	24
02105012	13	13	48	30
02105016	16	16	58	36
02105020	20	22	80	50
02105022	22	24	90	56
02105026	26	28	112	70

## COMMERCIAL WIRE ROPE THIMBLE (STAINLESS STEEL)

- Material: Stainless Steel (aisi 304)
- Finish: Electro-Polished

**⚠ NOT SUITABLE FOR LIFTING APPLICATIONS**

DIMENSIONS & MASSES ARE SUBJECT TO COMMERCIAL TOLERANCES AND DESIGN CHANGES WITHOUT NOTICE.

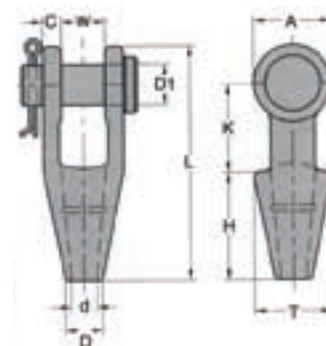
Product Code	Wire Rope Dia. (mm)	Overall Length (mm)
02106720	2	14
02106730	3	17
02106740	4	18
02106750	5	21
02106760	6	25
02106780	8	30
02106800	10	36



## FORGED OPEN SPELTER WIRE ROPE SOCKET

- Specification: Federal Specification RR-S-550D, Type A.
- Finish: Galvanized.

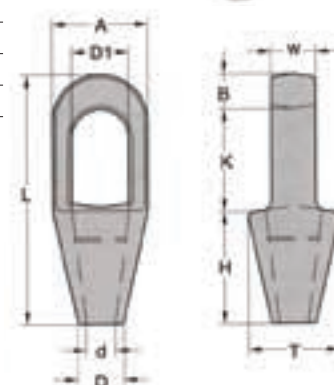
Product Code	Part No.	Wire Rope dia (mm)	L	W	DI	d	D	T	H	K	A	C	N.W (kg)
02128113	8-734-13G	11-13	142	25	25	15	25	50	63	54	48	13	1.1
02128116	8-734-16G	14-16	172	32	30	18	29	57	76	64	58	14	1.6
02128119	8-734-19G	18-20	202	38	35	22	32	67	92	76	67	16	2.6
02128122	8-734-22G	22-23	235	45	41	24	38	85	102	89	80	20	4.4
02128126	8-734-26G	24-26	268	52	51	29	44	95	114	102	96	23	7.0
02128128	8-734-28G	28-30	300	57	56	32	51	105	127	117	105	25	9.8
02128135	8-734-36G	32-35	335	64	62	38	57	120	140	127	121	29	14.0



## FORGED CLOSED SPELTER WIRE ROPE SOCKET.

- Specification: Federal Specification RR-S-550D Type B.
- Finish: Galvanized.

Product Code	Part No.	Wire Rope dia (mm)	L	B	A	DI	d	D	T	H	W	K	N.W (kg)
02127113	8-735-13G	11-13	138	18	51	30	14	25	50	64	22	57	0.7
02127116	8-735-16G	14-16	160	21	67	36	18	28	63	76	25	64	1.1
02127119	8-735-19G	18-20	192	27	76	41	21	32	70	89	32	76	2.0
02127122	8-735-22G	22-23	222	32	92	48	24	38	88	101	38	89	3.4
02127126	8-735-26G	24-26	251	35	104	58	29	45	96	114	45	102	4.8
02127128	8-735-28G	28-30	279	38	114	65	32	51	105	127	50	114	6.5
02127135	8-735-36G	32-35	308	41	135	71	38	57	121	140	57	127	9.0

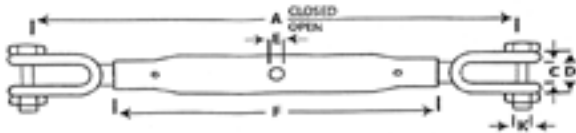


## AUSTRALIAN MANUFACTURED HIGH TENSILE CERTIFIED GALVANISED RIGGING SCREW



Grade P  
Thread: Metric  
Finish: Gavanised  
End: Clevis & Clevis  
Safety Factor: 6:1  
Certified To: AS 2319-2001

Product Code	Nominal Size	Open (mm) A	Closed (mm) A	B (mm)	C (mm)	D (mm)	E (mm)	F (mm)	K (mm)	WLL Tonne
02201013T	M12	510	340	36	15	35	8.5	230	10	1.00
02201016T	M16	520	350	45	20	40	9.0	230	12	1.60
02201019T	M20	555	390	55	22	46	10.5	230	16	2.50
02201026T	M24	730	550	59	30	58	13.0	236	20	4.00



## COMMERCIAL QUALITY GALVANISED RIGGING SCREW

- Thread: Metric
- Finish: Hot Dip Galvanised
- Ends: Clevis One End, Eye and Shackle Other

**⚠ NOT SUITABLE FOR LIFTING APPLICATIONS**

Product Code	Screw Dia. (mm)	Overall Length (mm)		B (mm)	C (mm)	G (mm)	S (mm)	W (mm)	ABL (t) **
		Open	Closed						
02201009	M10	349	235	152	8	8	21	11	1.52
02201013	M12	527	334	229	9	9	35	19	2.0
02201016	M16	556	375	229	11	13	48	22	3.0
02201019	M20	564	385	229	11	16	48	22	4.8
02201022	M22	704	465	305	13	20	51	25	6.8
02201026	M24	812	528	356	13	22	65	32	8.8
02201029	M27	817	542	356	13	22	66	32	11.2
02201032	M33	884	602	381	14	24	76	38	15.2
02201038	M39	934	644	407	16	33	90	47	20.8
02201045	M45	942	670	407	17	35	111	51	28.8
02201052	M50	1168	927	410	19	41	120	58	40.0

\*\*Approx Break Load

\*Overall Length of Rigging Screw, Not Include Shackle

## COMMERCIAL QUALITY STAINLESS STEEL RIGGING SCREW

- Thread: Metric
- Material: Stainless steel (aisi 304)
- Finish: Electro-Polished
- Ends: Eye + Eye

**⚠ NOT SUITABLE FOR LIFTING APPLICATIONS**

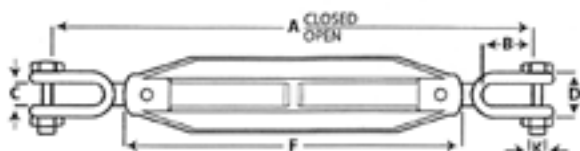
Product Code	Thread Size	Overall Length (mm) Max.	Overall Length (mm) Min.	Approx. Breaking Load (kg)
09568505	M5	160	120	160
09568506	M6	220	150	400
09568508	M8	290	200	800
09568510	M10	360	250	1,200



## AUSTRALIAN MANUFACTURED HIGH TENSILE CERTIFIED GALVANISED TURNBUCKLE

Grade P  
Thread: Metric  
Finish: Galvanised  
Ends: Clevis & Clevis  
Safety Factor: 6:1  
Certified To: AS 2319-2001

Product Code	Nominal Size	Open (mm) A	Closed (mm) A	B (mm)	C (mm)	D (mm)	F (mm)	K (mm)	WLL Tonne
02203013T	M12	465	340	36	15	35	190.5	10	1.00
02203016T	M16	475	355	45	20	40	204.0	12	1.60
02203019T	M20	510	395	46	22	46	216.5	16	2.50
02203026T	M24	580	455	59	30	58	232.0	20	4.00



## COMMERCIAL QUALITY GALVANISED TURNBUCKLE

• Thread: Metric • Material: Mild steel • Finish: Galvanised

**⚠ NOT SUITABLE FOR LIFTING APPLICATIONS**

TURNBUCKLE: DIMENSIONS & MASSES ARE SUBJECT TO COMMERCIAL TOLERANCES AND DESIGN CHANGES WITHOUT NOTICE. PRODUCT CODES LISTED DENOTE STANDARD STOCK LINES. OTHER TYPES/SIZES IMPORTED TO ORDER.

Thread Size	Product Code Eye + Eye	Product Code Hook + Eye	Overall Length (mm)	
			Max.	Min.
M4	02203004		120	71
M5	02203005	02204005	170	115
M6	02203006	02204006	250	165
M8	02203008	02204008	260	175
M10	02203009	02204009	300	210
M12	02203013	02204013	310	220
M16	02203016		410	300
M20	02203019		440	310
M22	02203022		510	370
M25	02203026		600	420



## COMMERCIAL QUALITY STAINLESS STEEL TURNBUCKLE

• Thread: Metric • Finish: Electro-Polished  
• Material: Stainless steel (aisi 304) • Ends: Eye + Eye

**⚠ NOT SUITABLE FOR LIFTING APPLICATIONS**

Product Code	Thread Size	Overall Length (mm) Max.	Overall Length (mm) Min.	Approx. Breaking Load (kg)
09568505	M5	160	120	160
09568506	M6	220	150	400
09568508	M8	290	200	800
09568510	M10	360	250	1,200

